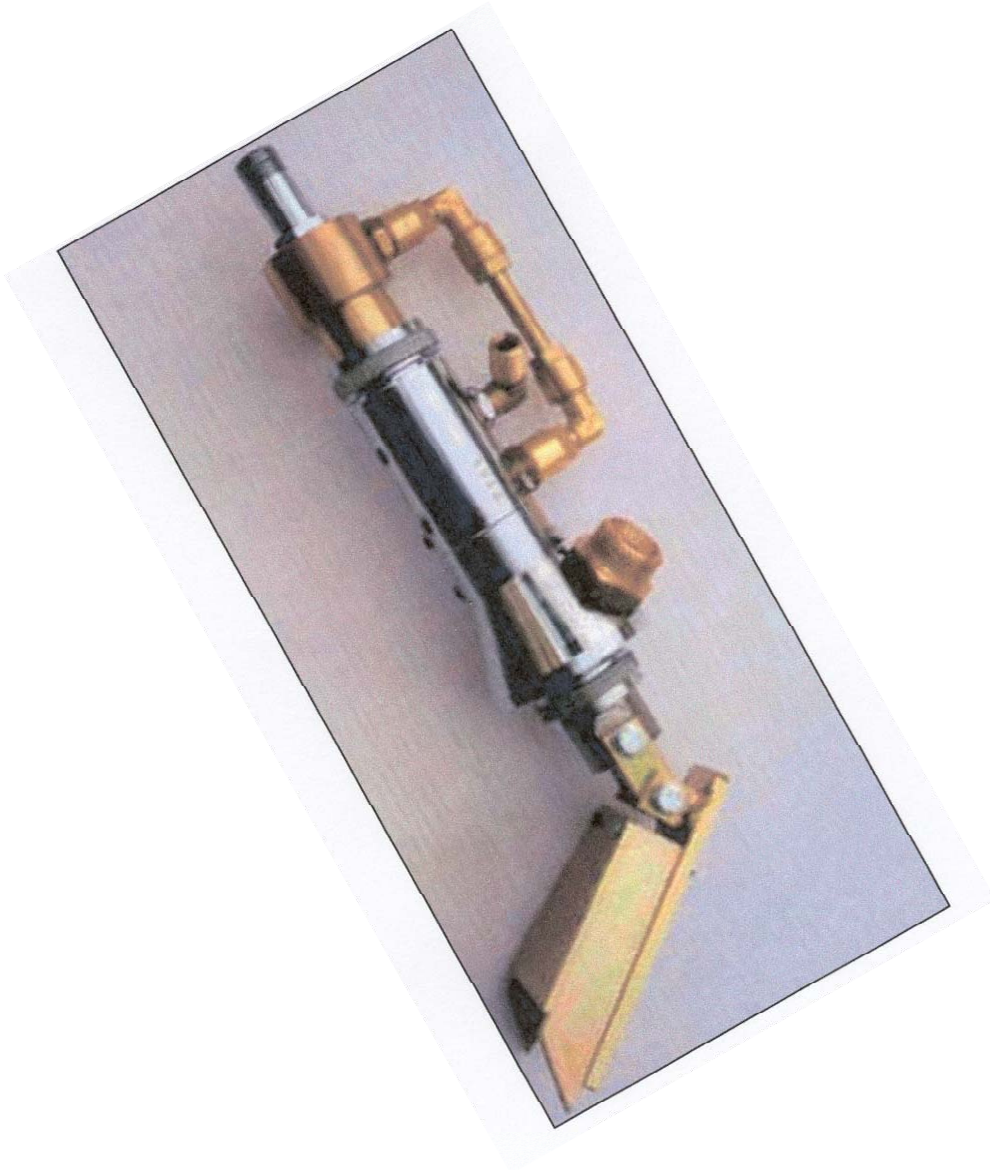




Kamber GLASS GUN

MODEL 90XHO



**PRECISION MADE IN SWITZERLAND AND DISTRIBUTED EXCLUSIVELY BY
M-B COMPANIES, INC.
IN NORTH AMERICA**

Pavement Marking Equipment Divisions
Eastern Region
79 Montgomery Street
Montgomery, PA 17752
1-570-547-1621

Western Region
2490 Ewald Avenue SE
Salem, OR 97302
1-503-364-2909

Kamber Glass Gun 90 XHO

FOR PRICE AND DELIVERY INFORMATION CONTACT

<p>EAST COAST DAVID KLINGER 1-800-233-8461 EXT 522 FAX 570-547-0619</p>	<p>WEST COAST STEVE CHRISTIE 1-800-253-2909 EXT 311 FAX 503-585-0617</p>
---	--

FOR TECHNICAL SERVICE
1-888-323-2900

CORPORATE HEADQUARTERS
1615 WISCONSIN AVENUE
NEW HOLSTEIN, WI 53061
920-898-4203
920-898-4588 FAX

**KAMBER GLASS GUN
MODEL 90XHO
(M-B COMPANIES, INC. Part No. 66050355)**

The **KAMBER** Model 90XHO Glass Gun is a high-quality, pneumatic glass gun, manufactured under the strict control of materials and workmanship, unequaled by any other manufacturer. The gun is designed for road marking application of all standard traffic glass beads.

TECHNICAL DATA:

- Separate non-bleeder atomizing air system to prevent pulsation.
- Pneumatic piston actuation system, independent from atomizing system allows for individual pressure setting for bead delivery and atomizing pressure.
- Glass diffuser nozzle provides application closer to the road surface, thus reducing effect of cross winds.

Glass Supply – Can be either pressurized or gravity flow.

SPECIFICATION: MODEL 90XHO

Air Nozzle – 1.5mm
Spray Width – 2” to 12”
Output – 2 to 40 lb/Min
Air Consumption – 2 to 7 CFM

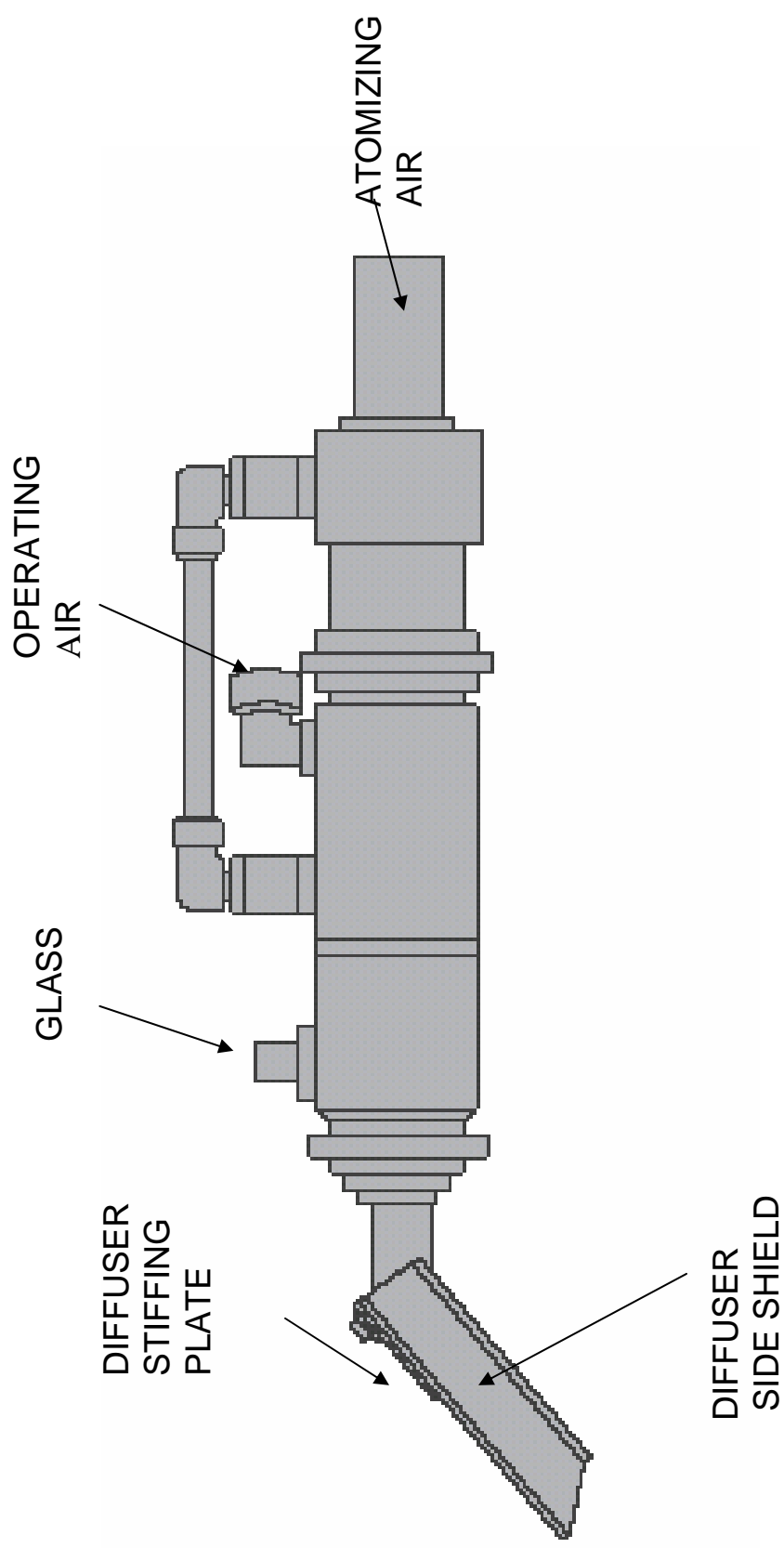
Material Nozzle Sizes:

SIZE	ITEM PART	MPH/BEAD SIZE
#6	Item 37A	4 to 8 MPH
#8	Item 37B	8 to 12 MPH
#10	Item 37C	12 to 20 MPH
#12	Item 37D	For Large Beads
#14	Item 37E	For Large Beads

Dimension: Length - 14.57 Inches
Width - 3.94 Inches
Height - 3.94 – 5.91 Inches
Weight - 6.62 Lbs.

WARRANTY:

One year on all parts for any fault in manufacturing



KAMBER 90XHO

OPERATING INSTRUCTIONS

1. PISTON PRESSURE

For piston operation – 40 psi to 80 psi. This pressure is the same pressure used to operate the paint guns.

2. ATOMIZING AIR PRESSURE

The atomizing air pressure is normally 4 to 8 psi. The air pressure is used to fluidize the glass as it leaves the glass gun nozzle into the diffuser and over the paint line. Adjust the atomizing air to obtain the best glass distribution.

NOTE: Never operate the gun with the atomizing pressure less than 3 psi, to prevent glass from entering the atomizing outlet.

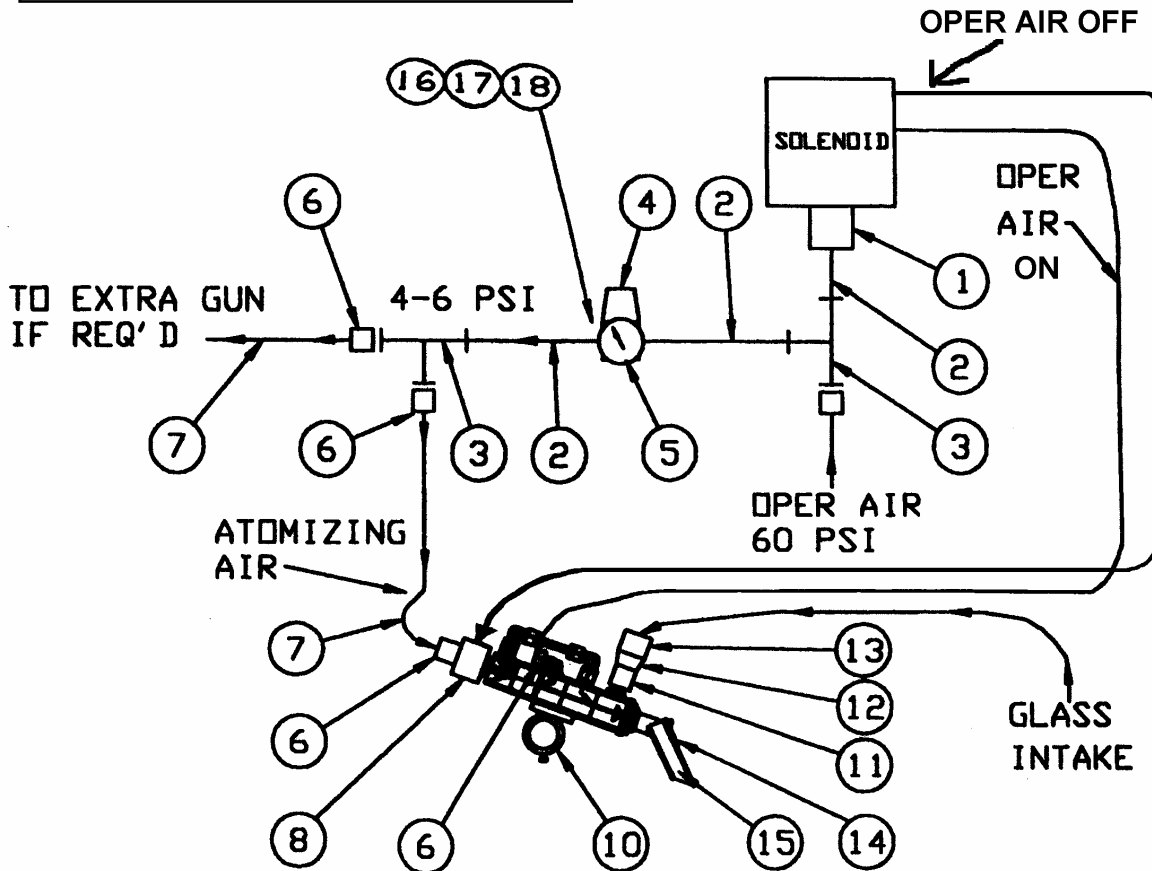
3. GLASS TANK PRESSURE

The air pressure in the glass tank determines the amount of glass discharges from the gun. Increasing tank pressure, increases glass flow, decrease tank pressure to decrease glass flow.

NOTE: If the required tank pressure, to obtain the correct amount of glass, is less than 25 psi, pulsation may occur. If pulsation does occur, change the material nozzle to a smaller size. (See Parts List for Part No.)

PARTS FOR INSTALLATION Kamber 90XHO

PART NO. 16, 17 & 18 TO BE USED WHEN THE AIR REGULATOR - ITEM #4 HAS 1/8" GAUGE PORTS.



ITEM	PART NO	DESCRIPTION	QTY
1	73115503	Bushing, Hex 3/8 to 1/4	1
2	73015309	Nipple Close	3
3	73055103	Tee, 1/4	2
4	7200200	Regulator	1
5	73250406	Gauge 0-15 PSI	1
6	73280909	Elbow 90° for 1/4 OD Tubing	5
7	73280607B	Tubing 1/4 OD (Length as Needed)	1
8	73035503	Coupling, Reducing 3/8 to 1/4	1
9	1120201002	Rod, Gun	1
10	3320201038	Mount, Gun	1
11	73045308	Elbow, 3/4" 45° Street	1
12	73015836	Nipple 3/4"	1
13	73036008	Coupler, Reducing 3/4" x 1	1
14	66050820	Diffuser Stiffing Plate	1
15	66050821	Diffuser Side Shield	2
16	73015108	Nipple, Close 1/8	1
17	73035301	Coupling, 1/4 x 1/8	2
18	73105101	Plug, Pipe 1/8	1

INSTALLATION INSTRUCTIONS

A parts package accompanies every Kamber 90XHO glass bead gun. This package includes all the necessary hardware and mounting brackets to complete the installation (**refer to parts check list on the following page).

Similar to all conventional glass bead guns the Kamber 90XHO has an inlet for glass bead supply and also for operating air. Hose adapters are enclosed to insure proper connection of gun inlets with most common size hoses and fittings.

Uncommon to all conventional glass guns the Kamber 90XHO offers an additional inlet for atomizing air flow. This atomizing air feature helps to prevent pulsation in bead flow as well as maintain even bead dispersion from the gun diffuser. To insure proper connection of the atomizing air feature, follow the suggested installation steps:

1. Place the enclosed ¼" tee into the main air line supplying the gun solenoids on each respective carriage.
2. At the open end of the ¼" tee, place a nipple and connect the enclosed regulator. (Important: air supply through the regulator must follow the direction of the arrows pre-marked on the back side of the regulator.)
3. Connect the enclosed pressure gauge to the regulator 90° to the inward flow of air.
4. If **installing a single** Kamber 90XHO gun, connect a nipple, adapter and 90° ¼" hose connector to one side of the regulator while plugging the unused side.
5. If **installing multiple** Kamber 90XHO guns, connect a nipple, adapter and 90° ¼" hose connector to both sides of the regulator and plug any unused inlets. A single regulator can operate a maximum of four (4) Kamber 90XHO guns.
6. Connect the remaining adapter and 90° ¼" hose connector to each Kamber 90XHO gun atomizing air inlet.
7. Cut proper lengths of enclosed ¼" hose and run between 90° ¼" hose connectors on regulator(s) to similar connector(s) at atomizing inlet of each mounted Kamber 90XHO gun.
8. Use the dial on the installed regulator(s) to set the flow of atomizing air to each gun. The recommended atomizing air pressure is between 4 and 8 psi. Once obtaining the proper setting, lock the dial in place with the ring mechanism,

** For illustration of proper Kamber 90XHO glass gun installation, refer to diagram on the next page.

TROUBLE SHOOTING

After completing the Kamber 90XHO glass bead installation, several adjustments may need to be made. The following adjustments are suggested for such occurrences.

1. Too much/too little glass bead flow:

- Check the size of the gun material tip (a number between 5 and 10 is embossed on each tip) and match the recommended tip size chart.
- Check bead tank pressure, which is recommended at a setting between 30 and 50 psi. (IMPORTANT: The Kamber 90XHO glass bead gun commonly performs under lower air and bead pressure settings than most other guns).

2. Pulsation of bead flow:

- Check the atomizing air setting on the installed regulator(s). The recommended setting is between 4 and 8 psi. (IMPORTANT: Atomizing air pressure must maintain a minimum of 3 psi to avoid glass beads from entering the atomizing outlet.)
- Check the position of the bead manifold on each carriage and adjust so the glass bead supply hoses allow a downward flow of glass to the gun.

* For further technical assistance with the Kamber 90XHO Glass Bead Gun, Please contact Gary Mark at M-B Companies Pavement Marking Equipment Division, Montgomery, PA – 888-323-2900 - Ext 523.

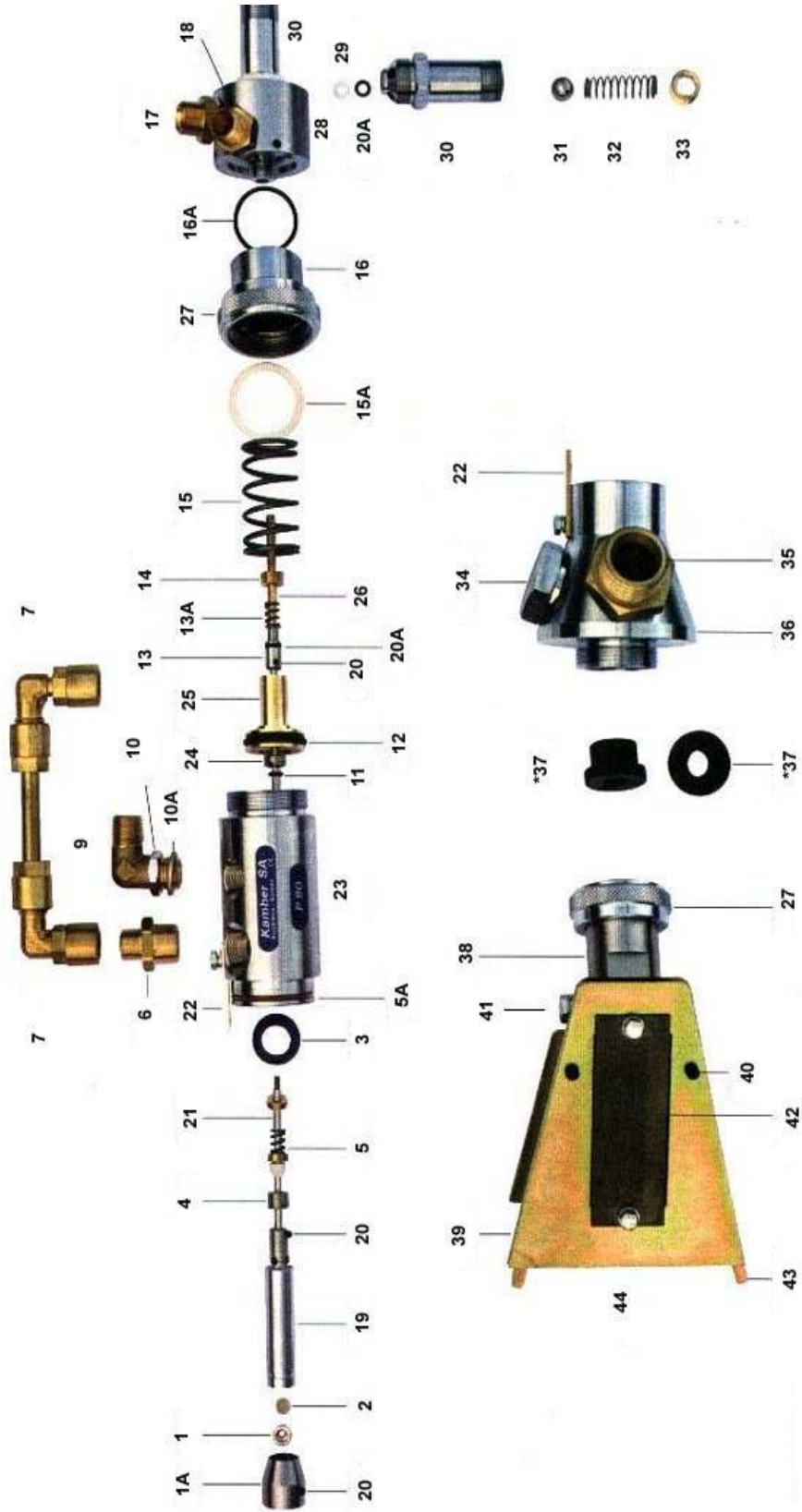
GUN MAINTENANCE

To keep the gun opening and closing smoothly (pneumatic piston), once a week, put a few drops of light oil in the operating port.

NOTE: NEVER IMMERSE THE GUN IN PAINT THINNER OR ANY OTHER TYPE OF SOLVENT.

Kamber 90XHO

8



Kamber 90XHO GLASS GUN PARTS LIST

ITEM	PART NUMBER	DESCRIPTION
	66050355	Complete Kamber Model 90XHO Glass Gun
1	66050811	Screw to Hold Filters
1A	66050826	Piston Head
2	66050020	7 mm Filters (4 pieces)
3	66050315*	Wiper Gasket on Piston
4	66050132*	Clamp Nut for Needle Packing
5	66050017*	Needle Packing, Teflon with Spring
5A	66050824	O-Ring for Body
6	66050304	Coupling 3/8" (i) - 1/4" (e)
7	66050119	Bed for Coupling Tube No. 8
8	66050310	Coupling Tube with Hexing Nut (50 mm Long)
9	66050306	Elbow, 90° 1/4"
10	66050307	Check Nut 1/4"
10A	66050827	Distance Ring
11	66050112*	O-Ring for Needle
12	66050109*	O-Ring for Piston
13	66050803	Needle Fixing Socket
13A	66050131	Spring
14	66050804	Cylinder Cap for Piston No. 25
15	66050140	Piston Spring
15A	66050835	Seal for Fixing Nut
16	66050139	Cylinder Cover
16A	66050828	PTFE Ring
17	66050125	Nipple 1/4" (i) - 1/4" (e)
18	66050805	Connection for Inlet 1/8" (e) - 1/4" (e)
19	66050806	Hard Chrome Piston without Head
20	66050026*	Check Screw for Needle M3 x 3 mm
20A	66050829	O-Ring 4 x 1.5 mm
21	66050309	Needle for Piston No. 25
22	66050807	Fixing Feather with Screw (2)
23	66050305	Body of the Gun
24	66050122	Clamp Nut for O-Ring
25	66050108	Piston
26	66050808	Needle Guide
27	66050046	Fixing Nut for Command Support
28	66050809	Support for Command
29	66050130*	O-Ring for Valve Body
30	66050136	Valve Body
31	66050311	Ball Valve, 10 mm, stainless steel
32	66050135	Valve Spring

ITEM	PART NUMBER	DESCRIPTION
33	66050127	Nut for Valve Body
34	66050810	Plug 3/4" (e)
35	66050811	Material Connection 1" - 1/4"
36	66050812	Head of the Gun
37A	66050403	Material Nozzle - 6 mm
37B	66050404	Material Nozzle - 8 mm
37C	66050405	Material Nozzle - 10 mm
	66050407	Material Nozzle - 7 mm
37D	66050409	Material Nozzle - 12 mm
37E	66050825	Material Nozzle - 14 mm
38	66050816	Support with Screw to Fix Diffuser
39	66050817	Diffuser Plate for Stiffening - Plate No. 42
40	66050818	Fixing Screw for No. 43
41	66050819	Set of Small Fixing Bars for Diffuser
42	66050820	Stiffening Plate
43	66050821	Left and Right Fastening for Diffuser
44	66050323	Adjustable Diffuser
	66050823	*Common Repair Kit



M-B Companies, Inc.

Administration

1615 Wisconsin Avenue
P.O. Box 200
New Holstein, WI 53061
Phone: 800-558-5800
FAX: 920-898-4588

Pavement Marking Equipment Divisions

EAST COAST DIVISION
79 Montgomery Street
Montgomery, PA 17752
Phone: 888-323-2900
FAX: 570-547-1629

WEST COAST DIVISION
2490 Ewald S.E.
Salem, OR 97302
Phone: 800-253-2909
FAX: 503-370-4389

