



Kamber PAINT GUN

MODEL 38 XHO



**PRECISION MADE IN SWITZERLAND AND DISTRIBUTED EXCLUSIVELY BY
M-B COMPANIES, INC.
IN NORTH AMERICA**

Pavement Marking Equipment Divisions
Eastern Region
79 Montgomery Street
Montgomery, PA 17752
1-570-547-1621

Western Region
2490 Ewald Avenue SE
Salem, OR 97302
1-503-364-2909

FOR PRICE AND DELIVERY INFORMATION
CONTACT

EAST COAST
DAVID KLINGER
1-800-233-8461 EXT 522
FAX 570-547-0619

WEST COAST
STEVE CHRISTIE
1-800-253-2909 EXT 311
FAX 503-585-0617

FOR TECHNICAL SERVICE
1-888-323-2900

CORPORATE HEADQUARTERS
1615 WISCONSIN AVENUE
NEW HOLSTEIN, WI 53061
920-898-4203
920-898-4588 FAX

KAMBER PAINT SPRAY GUN MODEL 38XHO

The Kamber Model 38XHO Traffic Paint Spray Gun is a high-quality, high-output, pneumatic gun, manufactured under the strictest control of materials and workmanship, unequaled by any other manufacturer. The gun is designed for road marking application of all standard traffic paints, including premix. The paint line delineation on the road is excellent and, with most paint, equals that of an airless system.

TECHNICAL DATA

Atomizing air flow (non-bleeder type) with automatic internal valve.

Easily converted to bleeder type if desired

Operating air, atomizing air and flow of material are completely separate, with no gaskets used.

Double-barreled air nozzle system is unique, resulting in very low air consumption for the paint output, which does not vary even if the exterior nozzle is worn.

By changing the exterior nozzle, spray widths ranging from 2 inches to 12 inches can be obtained without affecting air consumption.

PAINT

The set of nozzle available allow a precise adaptation of the spray gun to all unusual or special; road marking paints, cold, or hot as well as premix.

Effective air consumption from 50 psi to 100 psi is – 15 to 25 cfm – viscosity 90 to 110 KU

DIMENSIONS:

Length – 8.67 Inches

Width – 2 84 Inches

Weight – 6.84 Lbs

WARRANTY

One year on all parts for any fault in manufacturing.

SIZE SELECTION

HOSE SELECTION:

A. Operating Air Hose:

Use a 5/16" or 3/8" air hose and connect to the operating port of the paint gun
(UPPER PORT)

B. Atomizing Air Hose:

Use a 3/8" air hose minimum and connect to the atomizing port of the paint gun
(MIDDLE PORT)

C. Paint Hose:

Use a 1/2" to 3/4", and connect to the paint port of the paint gun
(LOWER PORT)

NOZZLE SIZE SELECTION:

The size of the machine and speed of operation determines the size of the Kamber Paint Spray Gun material and air nozzle that will insure the best performance.

Before choosing the set of nozzles for the spray gun, compare the effective output of the compressor on the machine for air consumption for each size nozzle.

The nozzles described are standard parts for average viscosity material and speeds. For additional information regarding special applications, please contact your Lafarge Road Marking Representative.

STANDARD PARTS	MODEL 38XHO
Material Nozzles	5.0 6.8 7.0 8.0 9.0 10.0
Air Nozzles	10.0 11.8 13.8
Exterior Nozzle Line Width 4 to 7" Line Width 8 to 12"	42-10-25 25-35-44
Needle	7022-7.5
Effective Air	15-25 CFM @ 50-100 psi

BASIC AIR NOZZLE:

The basic air nozzle determines the air consumption of the gun. For the correct air consumption, the basic nozzle must correspond to the number indicated on the list of nozzles. The number engraved on the nozzle indicates the diameter of the hole. The basic air nozzle does not influence the width of spray; only the external nozzle determines the width.

OPERATING INSTRUCTIONS

1. PRESSURE:

For piston operations – 60 psi to 70 psi

2. PRESSURE FOR ATOMIZING AND PAINT:

This gun, due to the special construction of the air nozzle, is capable of being operated with an atomizing pressure lower than the pressure in the material tank or in the low pressure pumps.

The lower the atomizing air pressure compared to the pressure in the paint tank, the larger the effective paint output of the gun.

KAMBER 38XHO LINE WIDTH CHART

GUN EXTERIOR NOZZLE

GUN MODEL	LINE WIDTH	NOZZLE NO.	HEIGHT FROM ROAD
38XHO	4"	42-10-25	3"
	6"	42-10-25	4 ½"
	8"	42-10-25	6"
	8"	25-35-44	5"
	10"	44	6"
	12"	44	7 ½"

NOTE: Height of the gun may vary from chart depending on paint pressure and atomizing pressure.

GUN USE AND MAINTENANCE

Before use, check that the gun's center section is filled with grease. (Use standard bearing grease). It is recommended that the special protective guard plate be reinstalled on the gun after maintenance to protect the guns' valve parts from glass spheres.

NEVER dip the gun in thinner or any other solvent.

MATERIAL NOZZLE:

ALWAYS TIGHTEN MATERIAL NOZZLE WITH A WRENCH PRIOR TO USE.

NEEDLE PACKING:

The needle packings are of new highly resistant material and can be expected to last for the entire painting season. With the special key provided with the gun, tightening or loosening of the needle packing is accomplished without disassembling the gun.

ACTIVATION OF THE GUN: (Pneumatic Piston)

Once a week, put a few drops of oil in the operating air port.

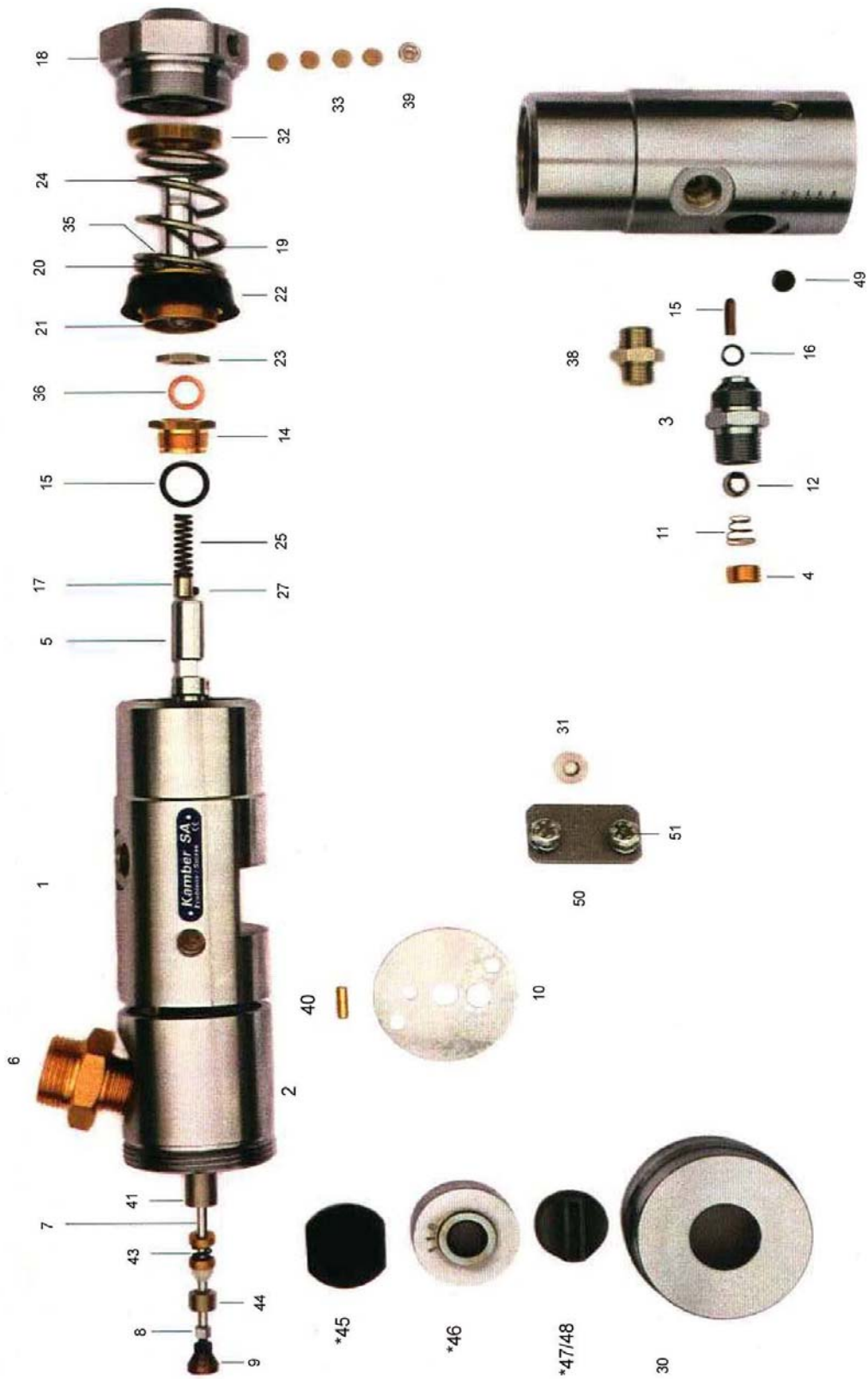
CLEANING THE PAINT PASSAGE IN THE GUN:

CAUTION - VERY IMPORTANT: Always **remove exterior nozzle** (Slot Nozzle), before flushing of the paint passage of the gun. If the exterior nozzle is not removed, paint will get into the AIR SYSTEM of the gun.

Maximum flushing pressure is 15 to 30 psi

FLUSHING OF THE ATOMIZING PASSAGE OF THE GUN:

BLEEDER GUN SETUP – Solvent may be flushed through the atomizing port of the paint gun while machine is in motion by use of a 3-way air and flushing valve.



Kamber Model 38XHO

Page 2 of 2

#26



#34



#52



#29



KAMBER PAINT GUN MODEL 38XHO

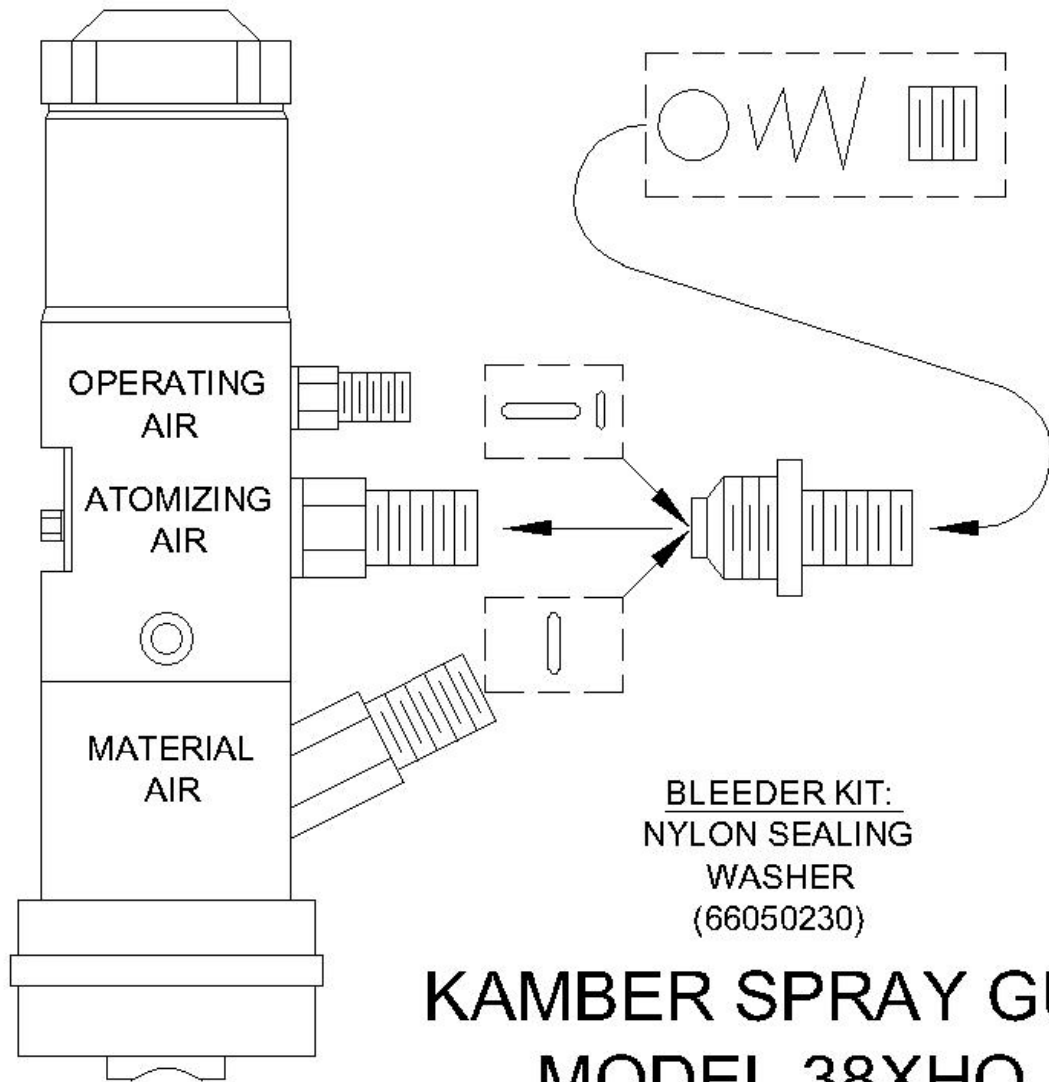
ITEM	PART #	DESCRIPTION
	66050356	Complete Kamber Model 38XHO Paint Gun
	66050227	Repair Kit Common Repairs
	66050228	Repair Kit Complete with Socket
	66050229	Set of Repair Tools
1	66050201	Body of Gun
2	66050901	Head of Gun with 1/5mm Screw
3	66050203	Valve Body with "O"- Ring
4	66050204	Nut for Valve Body
5	66050205	Transmission Lever
6	66050902	Material Connection
7	66050903	Hard Chrome Needle
8	66050904	Counter Nut for Needle Head
9	66050905	Needle Head
10	66050210	Nylon Gasket
11	66050211	Valve Spring
12	66050212	Ball Valve – 10mm Stainless Steel
13	66050213	Valve Shaft
14	66050214	Packing Nut
15	66050215	"O"-Ring for Packing Nut #14
16	66050216	"O"-Ring for Valve Body #3
17	66050034	Needle Fixing Socket
18	66050037	Cylinder Cover
19	66050038	Stainless Steel Piston Axle
20	66050039	Distance Ring, Piston Ring
21	66050040	Check Nut
22	66050019	GRACO "U"-Ring
23	66050042	Stainless Steel Check Nut on Axle #65
24	66050029	Piston Ring
25	66050044	Center Needle Spring
26	66050217	#12 Fork Wrench
27	66050026	Check Screw for Needle
29	66050048	Key for Tightening Needle Packing Nut
30	66050907	Fixing Nut for Exterior Nozzle
31	66050050	Plug for Body of Gun
32	66050031	Distance Ring
33	66050020	Filter
34	66050218	Wrench for Socket Head Cap Screw
35	66050023	Nylon Gasket for Shaft #49-#20
36	66050051	Copper Gasket on Shaft Between #49-#20
37	66050052	Copper Gasket 2-piece Between #14 Body
38	66050219	Double Male Adapter
39	66050053	Nut to Fasten Air Filter
40	66050054	Guide for Head of Gun
41	66050055	Stainless Steel Screw. Fasten Head
43	66050017	Teflon Gasket with Spring

44	66050221	Needle Packing Nut for Gasket #43
45A	66050911	Material Nozzle, Stainless Steel, Dia. 5.0
45B	66050909	Material Nozzle, Stainless Steel, Dia. 6.0
45C	66050912	Material Nozzle, Stainless Steel, Dia. 7.0
45D	66050913	Material Nozzle, Stainless Steel, Dia. 8.0
45E	66050914	Material Nozzle, Stainless Steel, Dia. 9.0
45F	66050915	Material Nozzle, Stainless Steel, Dia. 10.0
46AB	66050910	Basic Air Nozzle, SS or Hardened Metal - 10.0
46CD	66050920	Basic Air Nozzle, SS or Hardened Metal - 11.8
46EF	66050921	Basic Air Nozzle, SS or Hardened Metal - 13.8
47	66050074	Exterior Nozzle, Hard Metal, 42-10-25
48	66050059	Exterior Nozzle, Hard Metal, 25-35-44
49	3320201035	Sealing Washer
50	66050223	Guard Plate
51	66050225	Screw for Guard Plate
52	3310301001	Gun Shroud
53	3320201039	Mount
54		Thumb Screw
55		Locking Screw
56		Screw and Jam Nut
57	1120201002	Gun Mounting Post

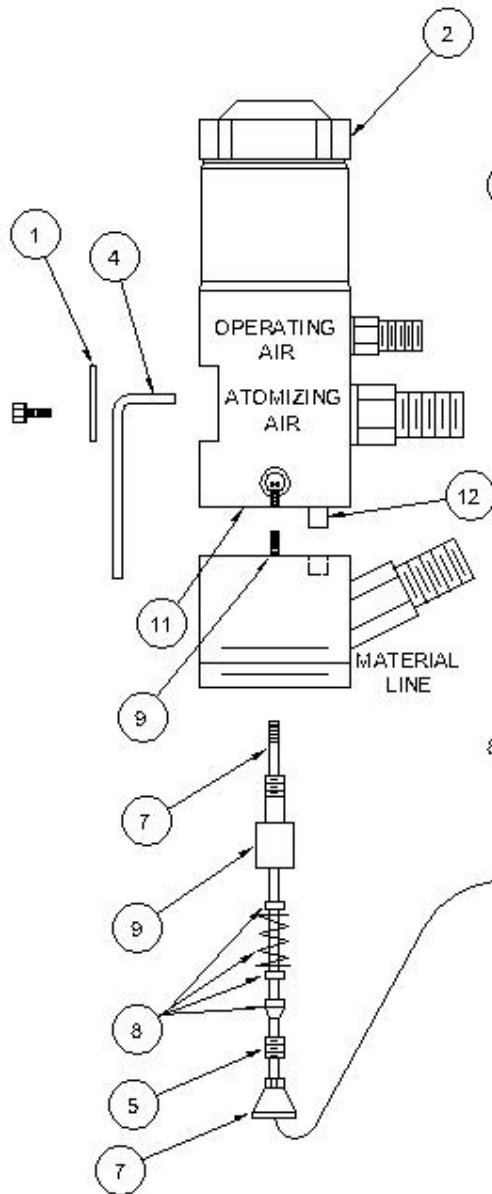
For pricing and order information – Please Contact:
M-B Companies, Inc.
Parts Department – Toll Free – David Klinger –
800-233-8461, Ext 522 or 504
570-547-0619 FAX

NON-BLEEDER KIT:

- VALVE SHAFT
- O-RING
- BALL VALVE
- VALVE SPRING
- LOCKING NUT



**KAMBER SPRAY GUN
MODEL 38XHO**



KAMBER SPRAY GUN MODEL 38XHO

1. REMOVE PLATE #1.
2. REMOVE CYLINDER COVER #2.
3. REMOVE MATERIAL NOZZLE WITH WRENCH #3.
4. REMOVE SET SCREW WITH WRENCH #4.
5. REMOVE NEEDLE PACKING NUT #5 WITH WRENCH #6.
6. TURN NEEDLE #7 CCW FROM BOTTOM UNTIL NEEDLE COMES FREE & REMOVE NEEDLE AND PACKING #8.
7. REMOVE SCREW #9 WITH WRENCH #10.
8. PULL BODY 'A' DIRECTLY AWAY FROM BODY 'B' BEING SURE NOT TO DAMAGE GASKET #11 OR GUIDE PIN #12.
9. REASSEMBLE IN REVERSE ORDER.



M-B Companies, Inc.

Administration

1615 Wisconsin Avenue
P.O. Box 200
New Holstein, WI 53061
Phone: 800-558-5800
FAX: 920-898-4588

Pavement Marking Equipment Divisions

EAST COAST DIVISION
79 Montgomery Street
Montgomery, PA 17752
Phone: 888-323-2900
FAX: 570-547-1629

WEST COAST DIVISION
2490 Ewald S.E.
Salem, OR 97302
Phone: 800-253-2909
FAX: 503-370-4389

